

BLOCK SIM™

Ultrasound-Guided Interfascial Plane Blocks Simulator



High Fidelity

Real clinical cases.



User-Friendly Interface

Simple, fast and effective user interaction with the simulator.



Echographic Monitoring

Real time visualization by a simulated ultrasound monitor.

BlockSim™ is an innovative, high fidelity system for the simulation of ultrasound-guided interfascial plane blocks.

BlockSim™ has been designed in order to meet the training needs in the field of ultrasound guided regional anesthesia allowing the visualization of the anatomy of the region of interest, giving information about the needle pathway to the target and testing the user ability to iden-

tify the structures. This simulator allows the visualization of the needle tip as it is passing through the tissues, the confirmation of the alignment with the desired path and a continual visualization of local anesthetic solution delivery to optimize local anesthetic distribution.

The simulator is equipped with 3 very realistic ultra-durable tissue inserts, including traditional anatomical land-

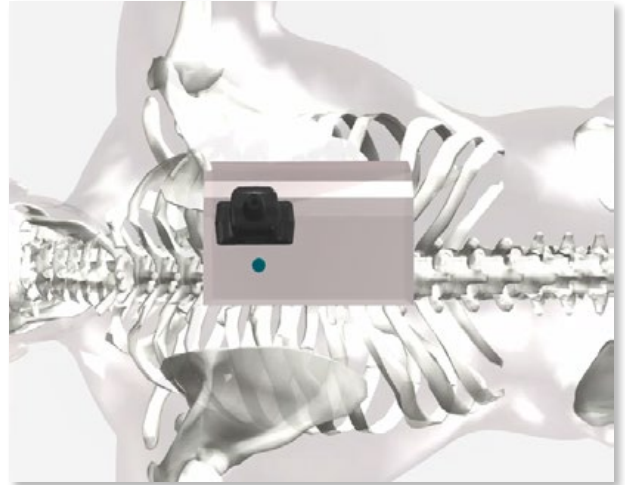
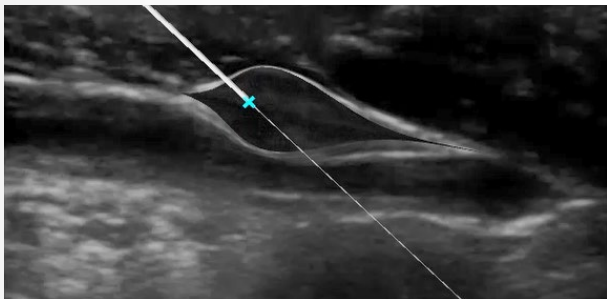
marks and fascia layers that provide precise tactile feedback to the user while he's inserting the needle as well as the feel of the typical fascial "pops".

The **BlockSim™** is composed by a lightweight, compact and easy to store black box equipped with high fidelity sensors that allows the positioning of the desired tissue insert based on the requests of the clinical case selected. The black box also connect with a simulated linear ultrasound probe and a real regional anaesthesia single shot needle that can be freely moved in different directions allowing the user to investigate the target and to choose the proper entry plane for the needle. Simulated injection of the local anaesthetic driven by a real syringe is also allowed as well as the visualization of local anaesthetic solution delivery to ensure proper distribution.

Thanks to the **BlockSim™** software, the user can practice and develop competency using simulation scenarios based on real clinical images. The available 9 different clinical cases take into account the proper movements to reach the target, the avoidance of unintended structures, the time to finish the procedure and the disposition of the local anaesthetic injected.

At the end of the procedure, for each clinical case, a global score is provided to the user based on his performance.

BlockSim™ represents the new generation of regional anaesthesia simulators since it allows the use of real needles, the puncture of extremely realistic tissue inserts and the inflation of the anaesthetic fluid without generating needle tracks or damages.



The BlockSim™ includes:

- 1 BlockSim™ sensorized main black box
- 1 Simulated Ultrasound Linear Probe
- 1 Sensorized Needle Holder
- 1 real regional anaesthesia single shot needle
- 1 Syringe
- 1 Abdominal Tissue Insert (PAD A)
- 1 Pectoralis Tissue Insert (PAD B)
- 1 Spinal Tissue Insert (PAD C)
- Laptop PC with pre-installed BlockSim™ software (9 clinical cases)
- LCD 21,5" monitor
- IP67 certified and waterproof transport
- case for the BlockSim™ devices and the Laptop PC
- User manual
- Installation support and remote training
- Lifetime free software updates and upgrades
- 1 year hardware warranty

BlockSim™ is a product from Accurate, a company blending international experience, scientific research, engineering and development of truly effective hi-tech educational solutions in the medical field.

Clinical use disclaimer: BlockSim™ is licensed for use for educational purposes only. BlockSim™ is not intended for clinical use. Accurate srl patent.



1 YEAR WARRANTY



FOR FURTHER INFORMATION
[HTTP://BLOCKSIM.ACCURATESOLUTIONS.EU/](http://BLOCKSIM.ACCURATESOLUTIONS.EU/)