

PAJUNK®

SPROTTE® cannulas

The original – in a class of its own



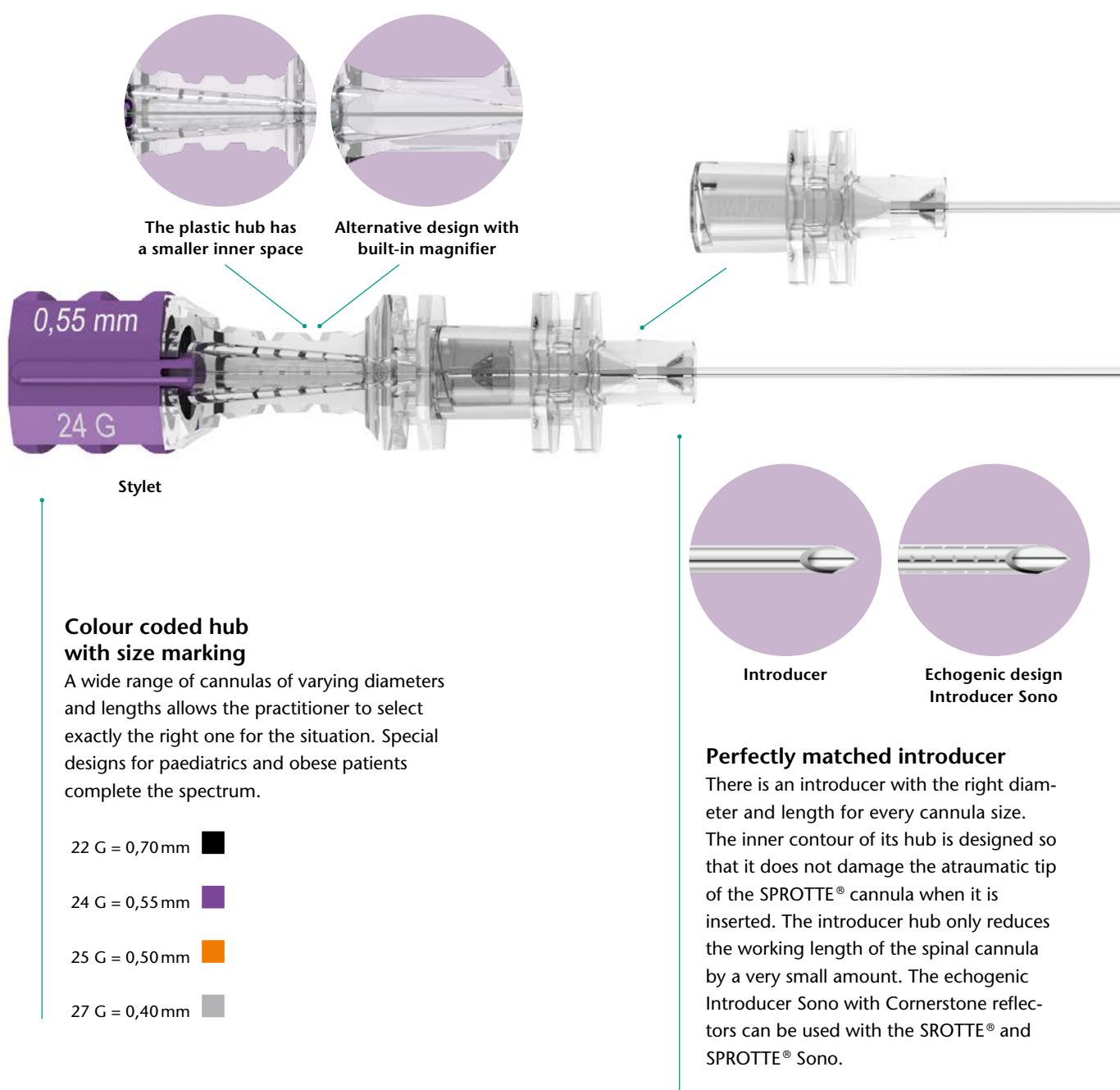
Regional anaesthesia

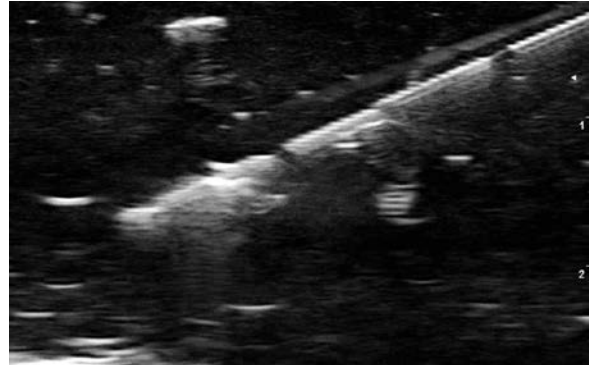
MADE IN GERMANY

The SPROTTE® cannula

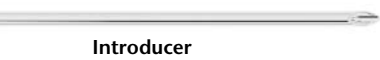
The Original – made by PAJUNK®

PAJUNK® revolutionised spinal anaesthesia in the 1970s thanks to the SPROTTE® cannula, a joint development by PAJUNK® and Prof. Sprotte. Its atraumatic tip design made it the first puncture cannula to minimise the many side-effects of spinal anaesthesia, making it an alternative to general anaesthetic. The atraumatic SPROTTE® puncture cannula has been the undisputed standard device for spinal anaesthesia and lumbar puncture for 30 years. Its made in Germany design, quality and finish meet the highest quality requirements.^{1,2}

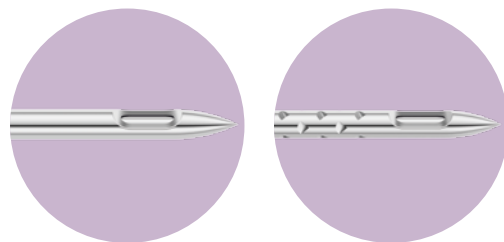




PAJUNK® has developed the SPROTTE® Sono to take the growing importance of the ultrasound process for precise cannula placement in spinal anaesthesia into account.



Introducer



SPROTTE®

Echogenic design
SPROTTE® Sono



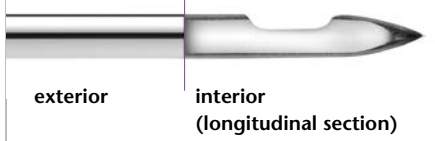
SPROTTE® cannula

Stylet for stabilising the cannula;
closes the eye precisely.³



Ogive-shaped
tip geometry

Inner lumen with reduced surface roughness



exterior

interior
(longitudinal section)

High processing quality

The entire cannula is made of high-quality stainless steel. The inner lumen and the surface are polished with absolute precision and are guaranteed burr-free.

- ➔ *Atraumatic puncture cannula*
- ➔ *Low incidence of post-lumbar-puncture headache*
- ➔ *Echogenic SPROTTE® Sono*
- ➔ *Fitting cannula due to broad cannula range*
- ➔ *Designs for paediatrics and obese patients*
- ➔ *Individual combination of ultrasound-optimised and standard components*

The original SPROTTE® cannula

Atraumatic puncture and very short reaction times

The secret of the SPROTTE® cannula's success lies in its unique tip geometry and basic design. These atraumatic quality features lead to outstanding gliding properties, minimise injuries during puncture and prevent the introduction of foreign objects and tissue particles into the spinal space. The time required between puncture and injection of the anaesthetic is markedly reduced, because the geometry of the lateral eye encourages the free flow of cerebrospinal fluid, which is also immediately recognised by the user thanks to the special cannula hub.

- ➔ Reduced need for treatment
- ➔ Fewer complications
- ➔ More efficient

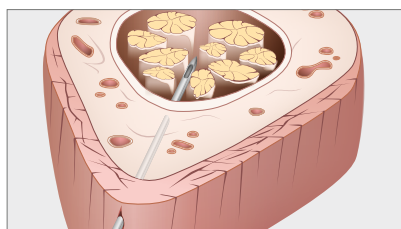
1. Atraumatic puncture



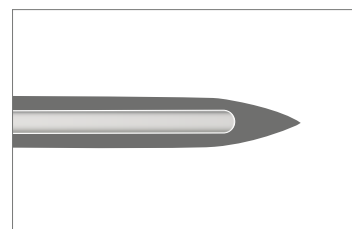
➔ *Stylet stabilises cannula guidance*⁴



The stylet accurately closes the lateral eye of the cannula.



The ogive-shaped tip design leads to the atraumatic property and tactile perception, when penetrating tissues of varying density.



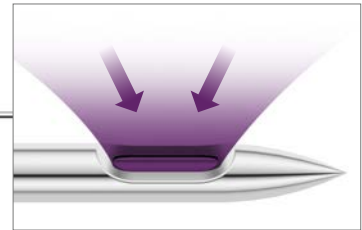
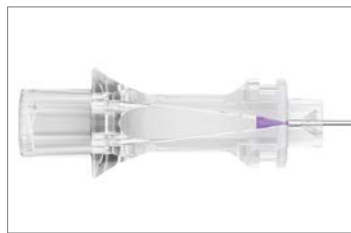
The rounded end of the stylet avoids abrasion of metal particles off the cannula tube, and their transport into the spinal region.

2. Free flow of cerebrospinal fluid enables accurate placement



**Time saved:
Smaller inner space**
The plastic hub is designed so that it is filled with cerebrospinal fluid more quickly.
➔ CSF is recognised as soon as it enters.⁵

Alternative design with built-in magnifier
➔ Even small amounts of CSF are clearly recognised.



The location and size of the lateral eye in the tip of the cannula ensures free fluid flow, even if the opening is partly blocked by arachnoidea.
➔ This means that correct placement of the cannula tip is immediately ascertained.

Better CSF visibility (magnifier)

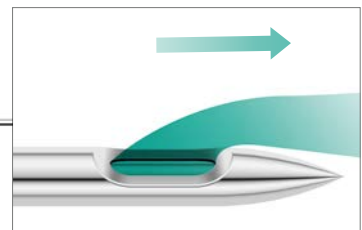
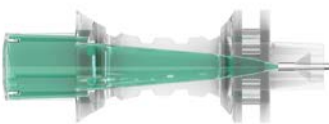


Rapid, unhindered CSF backflow



The interval between puncture and injection of the anaesthetic is markedly reduced

3. Gentle injection of the anaesthetic

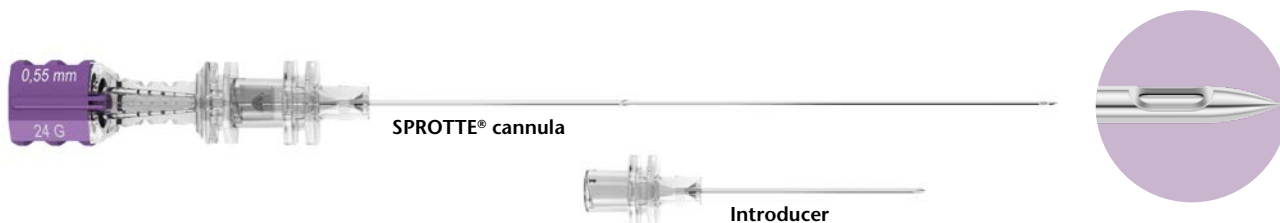


The ogive shape causes that the anaesthetic is administered through the cannula tip in a very gentle, soft stream.

Spinal anaesthesia

All at a glance

SPROTTE®



SPROTTE® cannula



	Without introducer	With introducer 30mm	With introducer 40mm	
Size	Item no.	Item no.	Item no.	PU
25 G x 150mm			061151-29A	10
25 G x 123mm	151151-29A			10
25 G x 120mm	031151-29A		051151-29A	10
25 G x 103mm			041151-29A	25
25 G x 90mm	501151-29A	021151-29A		25
25 G x 70mm		021151-29B		25
25 G x 35mm	001151-29E			25
24 G x 150mm	141151-30A		131151-30A	10
24 G x 120mm	031151-30A		041151-30A	10
24 G x 103mm	521151-30A		021151-30A	25
24 G x 90mm	001151-30A	121151-30A		25
24 G x 70mm	001151-30B	021151-30B		25
24 G x 35mm	001151-30E			25
24 G x 25mm	001151-30D			25
22 G x 150mm	041151-30C		141151-30C	10
22 G x 120mm	031151-30C		131151-30C	10
22 G x 103mm	521151-30C		221151-30C	25
22 G x 90mm	001151-30C	021151-30C		25
22 G x 70mm	051151-30C	051151-30B		25
22 G x 50mm	071151-30C			25

SPROTTE® cannula with magnifying effect



	Without introducer	With introducer 30mm	With introducer 40mm	
Size	Item no.	Item no.	Item no.	PU
29 G x 90mm		501151-28A		25
27 G x 123mm	231151-27A			10
27 G x 120mm			151151-27A	10
27 G x 103mm			141151-27A	25
27 G x 90mm	161151-27A	121151-27A		25
27 G x 70mm		121151-27B		25
27 G x 35mm	111151-27A			25
27 G x 25mm	101151-27A			25
25 G x 123mm	251151-29A			10
25 G x 120mm			171151-29A	10
25 G x 103mm			161151-29A	25
25 G x 90mm	521151-29A	511151-29A		25

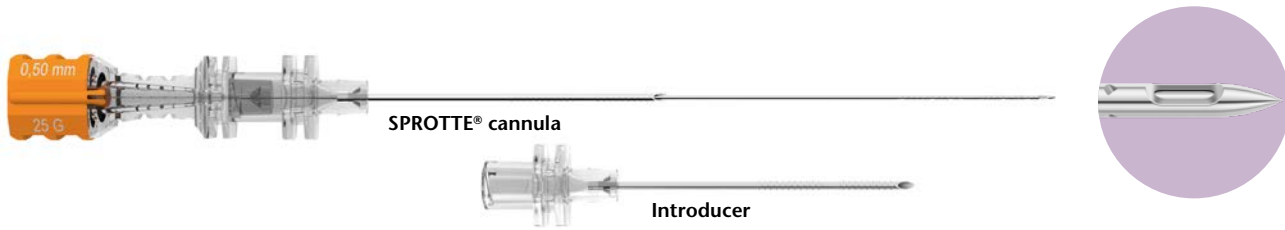
IntroDucer

for SPROTTE® cannulas



	30mm	40mm		
Size	Item no.	Item no.	Cannula size	PU
0,70	071151-30L		27 G, 29 G	25
0,70		071151-30M	27 G, 29 G	25
0,80	021151-30L		24 G, 25 G	25
0,80		021151-30M	24 G, 25 G	25
1,00	001151-30L		22 G	25
1,00		001151-30M	22 G	25

SPROTTE® Sono



SPROTTE® Sono cannula



Without introducer

With introducer
35 mm

Size	Item no.	Item no.	PU
25 G x 90 mm	501185-29A	021185-29A	25

SPROTTE® Sono cannula with magnifying effect



With introducer
35 mm

With introducer
50 mm

Size	Item no.	Item no.	PU
27 G x 90 mm	121185-27A		25
27 G x 120 mm		151185-27A	25

IntroDucer Sono

for SPROTTE® cannulas



50 mm

Size	Item no.	Cannula size	PU
1,00	001195-30R	27 G, 25 G	25



Studies

- **Baumgarten K.** Importance of the needle bevel during spinal and epidural anesthesia, *Reg. Anesth.* 1995; 20(3): 234–238

- **Carson D., Serpell M.** Choosing the best needle for diagnostic lumbar puncture, *Neurol.* 1996 Juli; 47(1): 33–37

- **Cesarini M., Torrielli R., Lahaye F., Mene J.M., Cabiro C.** Sprotte needle for intrathecal anaesthesia for Caesarean section: incidence of postdural puncture headache, *Anaesth.* 1990 Aug.; 45(8): 656–658

- **Evans R.W., Armon C., Frohman E.M., Goodin D.S.** Assessment: prevention of post-lumbar puncture headaches. Report of the Therapeutics and Technology Assessment Subcommittee of the American Academy of Neurol., *Neurol.* 2000; 55: 909–914

- **Flaatten H., Felthaus J., Kuwelker M., Wisborg T.** Postural post-dural puncture headache. A prospective randomised study and a meta-analysis comparing two different 0.40 mm O.D. (27 g) spinal needles, *Acta. Anaesth. Scand.* 2000 Juli; 44(6): 643–647

- **Hirasawa Y., Katsumi Y., Küsswetter W., Sprotte. G.** Experimentelle Untersuchungen zur peripheren Nervenverletzung durch Injektionsnadeln, *Reg Anaesth.* 1990; 13: 11–15

- **Kopacz D.J., Allen H.W.** Comparison of needle deviation during regional anesthetic techniques in a laboratory model, *Anesth. Analg.* 1995 Sep; 81(3): 630–633

- **Jäger H., Schimrigk K., Haaß A.** Das postpunktionelle Syndrom – selten bei der Verwendung der Punktionsnadel nach Sprotte, *Akt Neurol.* 1991 April; 18: 61–64

- **Jeng C.L., Rosenblatt M.A.** Intraneural injections and regional anesthesia: the known and the unknown, *Minerva Anestesiol* 2011 Januar; 77: 54–58

- **Lim M., Cross G.D., Sold M.** Postspinaler Kopfschmerz: Ein Vergleich der 24 G Sprotte-Kanüle mit einer 29 G Quincke-Kanüle, *Anaesthesist* 1992; 41: 539–543

- **Morley-Forster P.K., Angle P.J., Littleford J., Halpern S.H., Currin M.** Post-Dural Puncture Headache in the Parturient - A Comparison of the Special Sprotte Vs. Tuohy Needle, *SOAP Abstracts* 2000: A62

- **Pfadenhauer K.** Liquorpunktion, Haverkamp et al., *Internistische Intensivmedizin*, Thieme Verlag 2009; 206–208

- **Pittoni G., Toffoletto F., Calcarella G., Zanette G., Giron G. P.** Spinal Anesthesia in Outpatient Knee Surgery: 22-Gauge Versus 25-Gauge Sprotte Needle, *Anesth. Analg.* 1995; 81: 73–79

- **Ross B.K., Chadwick H.S., Mancuso J.J., Benedetti C.** Sprotte Needle for Obstetric Anesthesia: Decreased Incidence of Post Dural Puncture Headache, *Reg Anaesth.* 1992 Jan.–Feb.; 17(1): 29–33

- **Saenghirunvattana R., Tantivitayatan K., Chumnanvech W., Tangsukkasemsun S., Siritongtaworn P.** A Comparison study between newly-designed pencil-point and cutting needles in spinal anesthesia, *J. Med. Assoc. Thai.* 2008; 91 (Suppl 1): S156–161

- **Sears D.H., Leeman M.I., Jassy L.J., O'Donnell L.A., Allen S.G., Reisner L.S.** The Frequency of Postdural Puncture Headache in Obstetric Patients: A Prospective Study comparing the 24-Gauge versus the 22-Gauge Sprotte Needle, *J. Clin. Anesth.* 1994; 6(1): 42–46

- **Sprotte G.** An atraumatic needle for continuous, epidural and plexus anesthesia, *Anaesth.* 1995 Nov.; 44(11): 789–792

- **Sprotte G., Schedel R., Pajunk H., Pajunk H.** Eine „atraumatische“ Universalkanüle für einzeitige Regionalanesthesien, *Reg. Anaesth.* 1987 Juli; 10(3): 104–108

- **Strupp M., Schueler O., Straube A., Von Stueckrad-Barre S., Brandt T.** Atraumatic Sprotte needle reduces the incidence of post-lumbar puncture headaches, *Neurol.* 2001; 57: 2310–2312

- **Tung C.E., So Y.T., Lansberg M.G.** Cost comparison between the atraumatic and cutting lumbar puncture needles, *Neurol.* 2012 Jan. 10; 78(2): 109–113

- **Vakharia V.N., Lote H.** Introduction of Sprotte needles to a single-centre acute neurology service: before and after study, *J. R. Soc. Med. Sh. Rep.* 2012 Dec; 3(12): 82

- **Vallejo M.C., Mandell G.L., Sabo D.P., Ramanathan S.** Postdural Puncture Headache: A Randomized Comparison of Five Spinal Needles in Obstetric Patients 2000; *Anesth. Analg.* 2000; 91: 916–920

PAJUNK® GmbH
Medizintechnologie
Karl-Hall-Strasse 1
D-78187 Geisingen/Germany
Phone +49 (0) 77 04/92 91-0
Telefax +49 (0) 77 04/92 91-6 00
www.pajunk.com

PAJUNK® Medical Produkte GmbH
Germany • Austria • Benelux
Karl-Hall-Strasse 1
D-78187 Geisingen/Germany
Phone +49 (0) 77 04/80 08-0
Telefax +49 (0) 77 04/80 08-150
www.pajunk.com